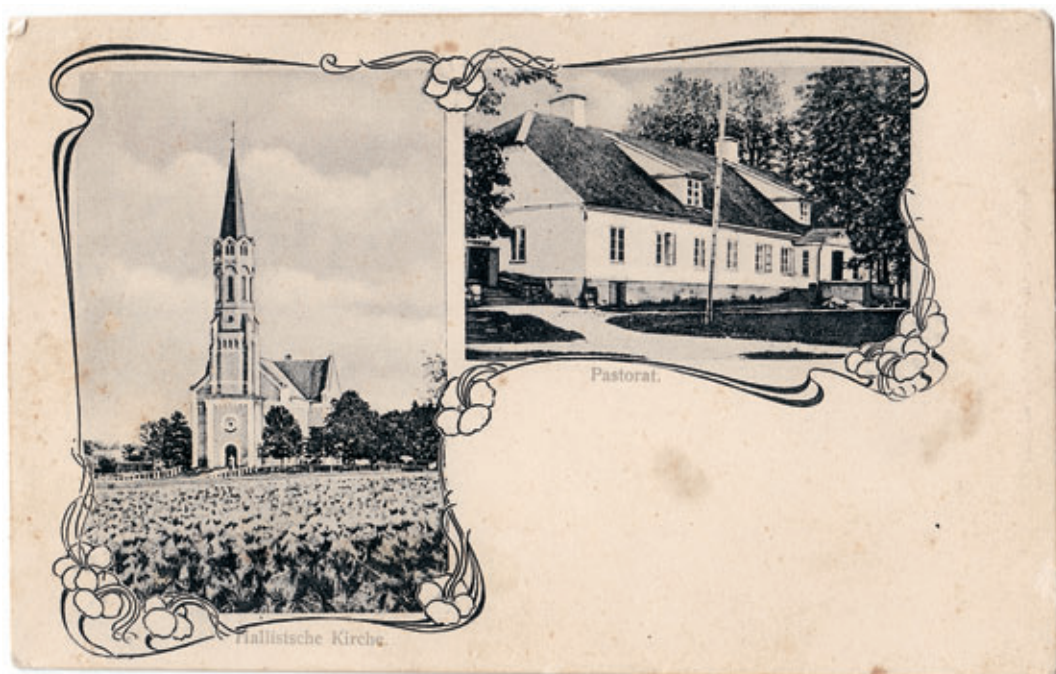




1. Abja vaated. 1930. aastad, VMF 518: 696.



2. Halliste kirik ja pastoraat. 20. sajandi algus, VMF 518: 67.



1. Võhma meierei. U 1919. aasta, VMF 518: 413.



2. Johann Köleri hauaplats Suure-Jaanis. 1910. aastad, foto Jaan Riet, VMF 518: 927.



1. Aino Tamm. Karl August Hindrey šarž, VMF 518: 521.



2. Holstre naine. 1925. aasta, VMF 518: 292.



1. Suure-Jaani kiriku sisevaade. 1934. aasta, VMF 518: 846.



2. Liplapi kodumajanduskool. 1910. aastad, VMF 518: 105.



1. Uue-Suislepa mõis. U 1910. aasta, VMF 518: 32, koloreeritud.



2. Anrepi lõvi. 1920. aastad, foto E. Feldmann, VMF 518: 310.



1. Postkaardi tagakülg 20. sajandi algusest, VMF 518: 628.



2. Mõisaküla vaksal. U 1905. aasta, VMF 518: 541, koloreeritud.



1. Abja linavabrik. 1920. aastad, VMF 518: 754.



2. Pilstvere kivitööstus. 1990. aasta, foto Endel Veliste, VMF 518: 173.



1. Suure-Jaani järv. 1910. aastad, foto H. Kuhlbusch, VMF 518: 780, koloreeritud.



2. Lahtine postkaart. 1977. aasta, VMF 518: 862.



Näidised välisservast, äärekirjast, keskkirjast, kesktribust ja sümmeetriatelgedest.

1. Linase ühevärvilise välisserva ja äärekirja näidis – foto 2.
2. Linase ja villase ehk täpilise ääre ja äärekirja näidis – foto 5.
3. Keskkirja ja kesktribu näidised – fotod 3, 6.
4. Sümmeetriatelg kesktribuna – foto 3.
5. Rütmi tekitavate võimalike sümmeetriatelgede näidised – fotod 1, 4.

Vändra kihelkonna kirivöö ERM 8384

Foto 1



Võimalikud sümmeetriatelgede paigutused nr 2

nr 3

Fragment ERM 8384 Foto 2



Fragment ERM 8384

Foto 3



Vändra kihelkonna kirivöö – ERM A564: 1929

Foto 4



nr 2 nr 3

Foto 5

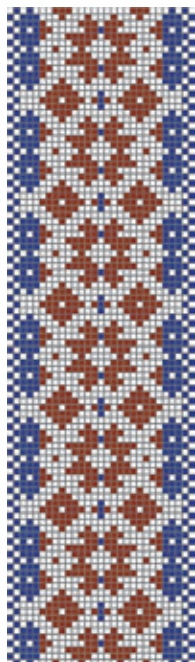


Foto 6

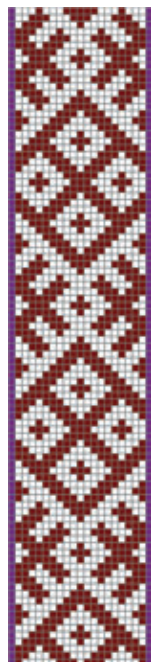


Vändra kihelkonna kirivööde joonised.

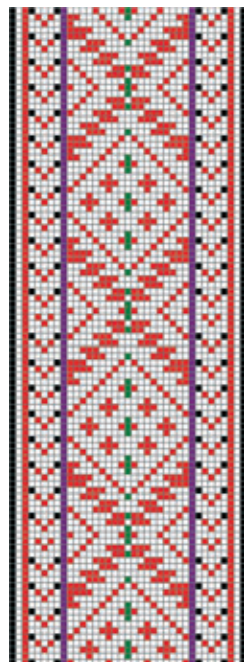
ERM 8384



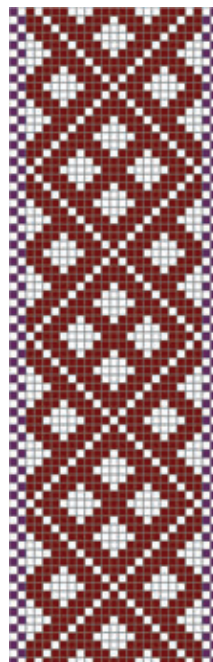
ERM 8389



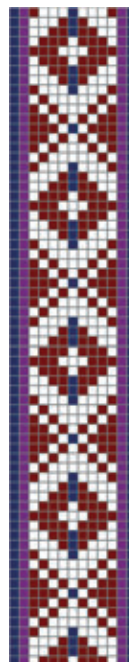
ERM 8390



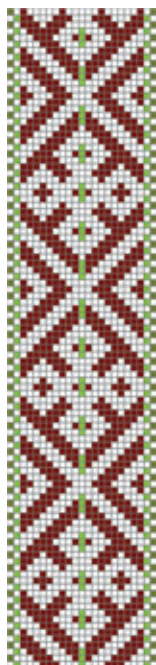
ERM 8391



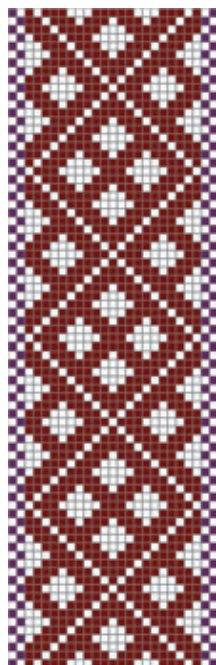
ERM 8395



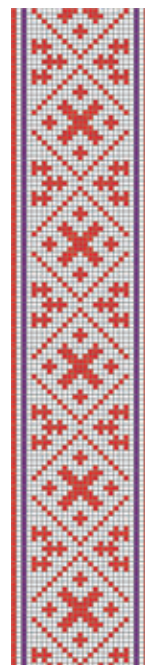
ERM 8418



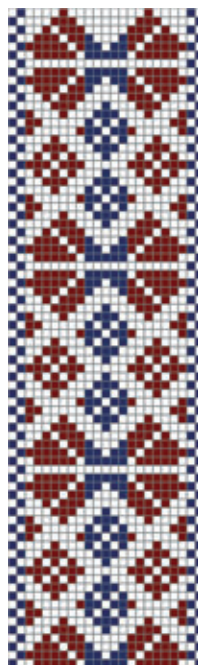
ERM 8419



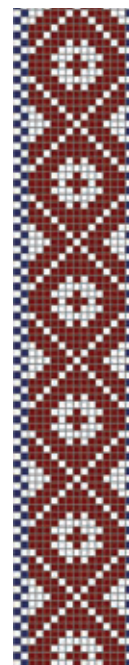
ERM 8420



ERM 8426

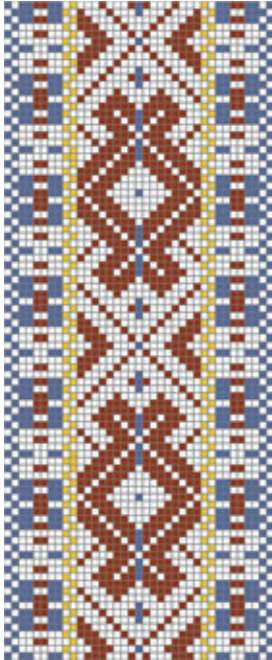


ERM 8431

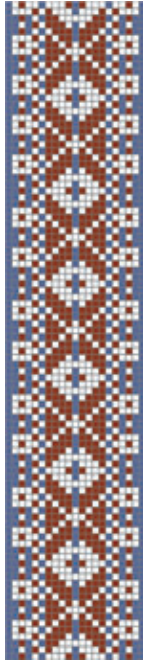


Vändra kihelkonna kirivööde joonised.

ERM 8438



ERM 8445



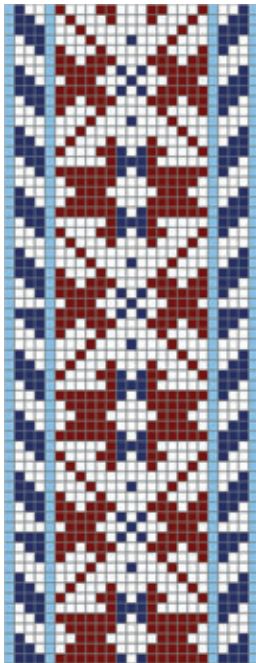
ERM 8454



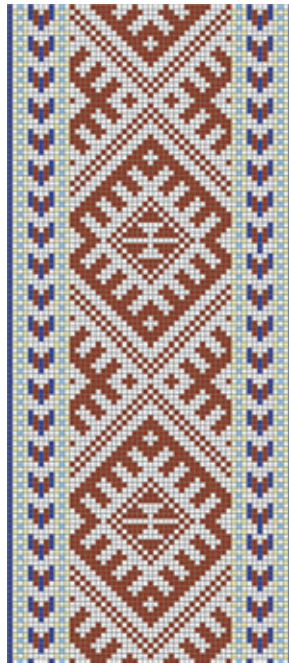
ERM 8470



ERM 8471



ERM 8479

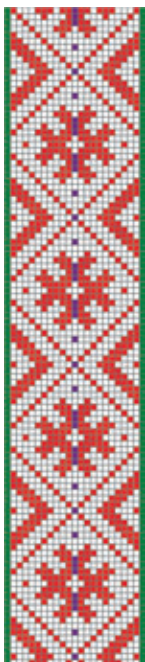


ERM 8484

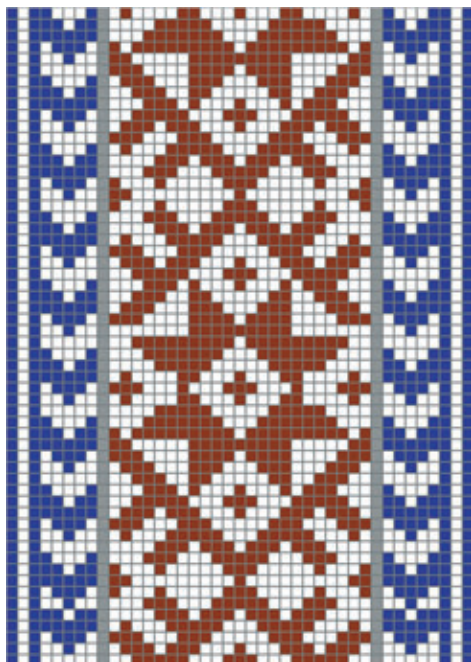


Vändra kihelkonna kirivööde joonised.

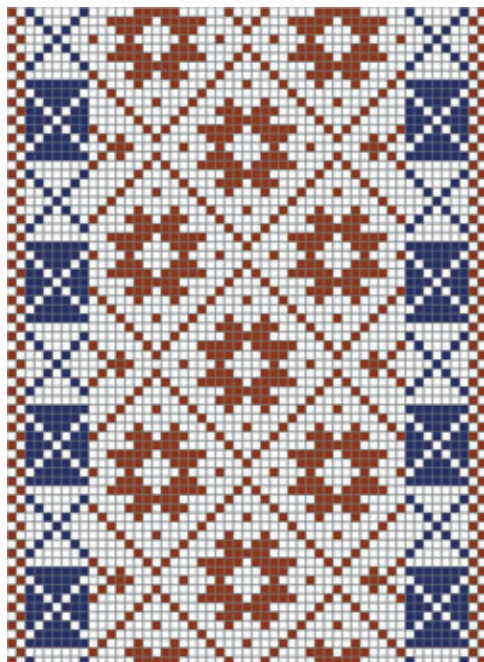
ERM 8492



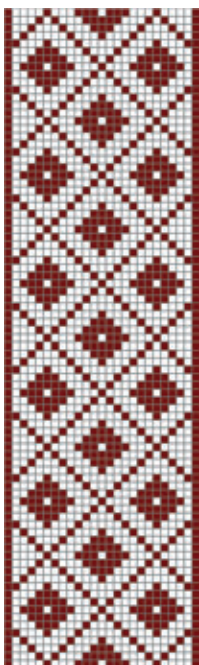
ERM 8501



ERM 8502



ERM 8506



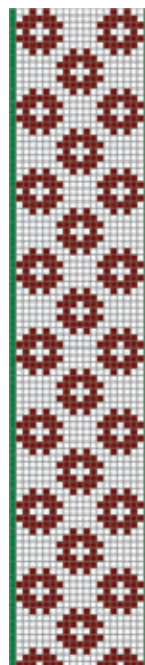
ERM 9729



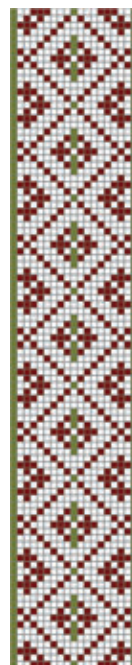
ERM 10691



ERM 12588

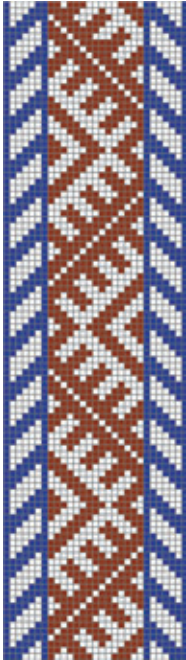


ERM 14678

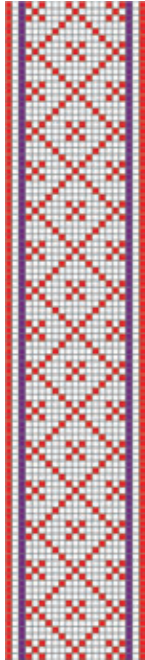


Vändra kihelkonna kirivööde joonised.

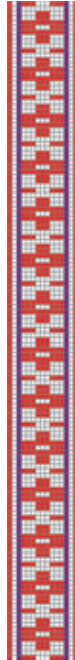
ERM 14682



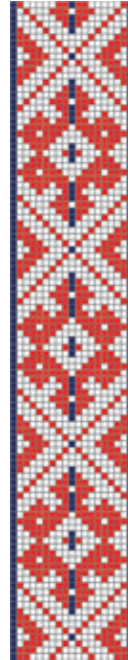
ERM 15143



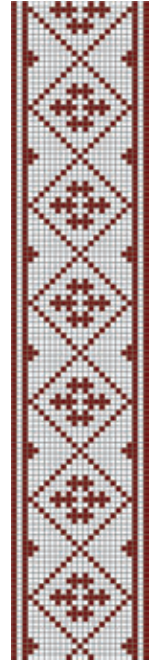
ERM 15144



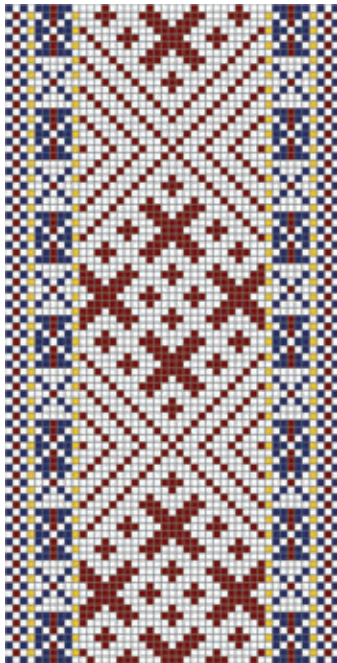
ERM A426: 4207



ERM A426: 4208



ERM A509: 764



ERM A509: 1079

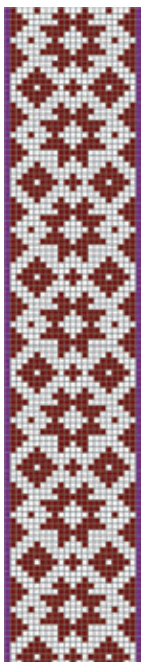


ERM A509: 1162

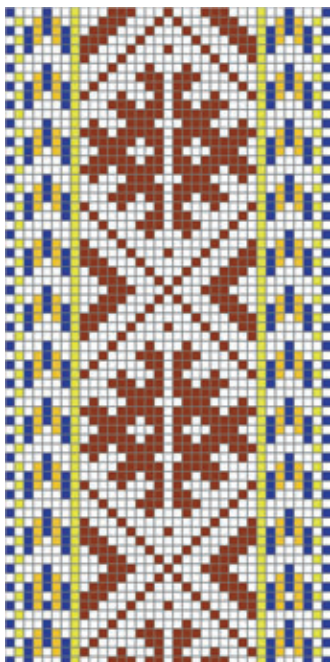


Vändra kihelkonna kirivööde joonised.

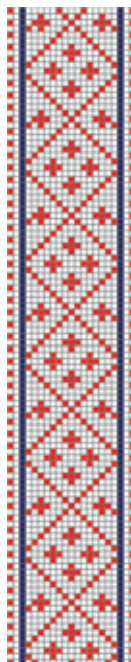
ERM A509: 1251



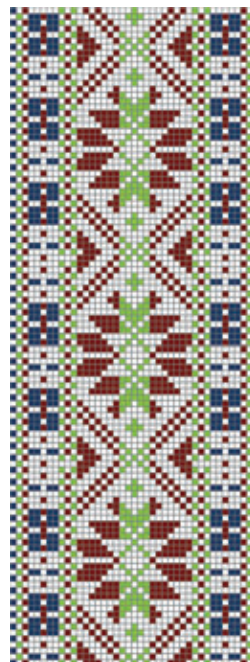
ERM A509: 1257



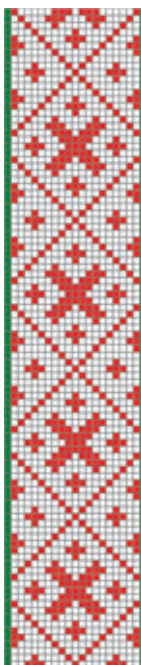
ERM A509: 1306



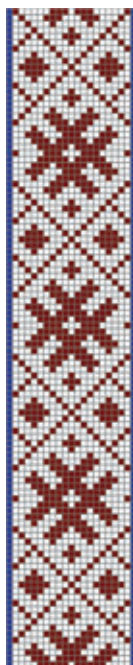
ERM A509: 1489



ERM A563: 822



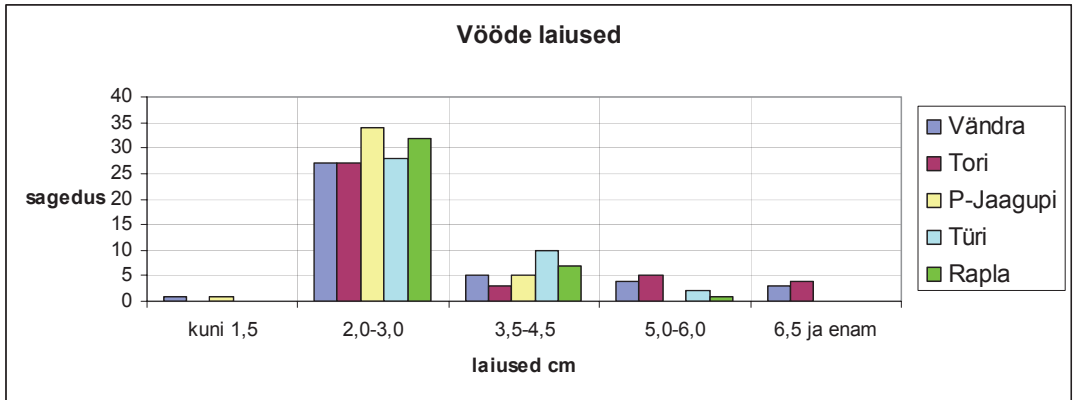
ERM A563: 1618



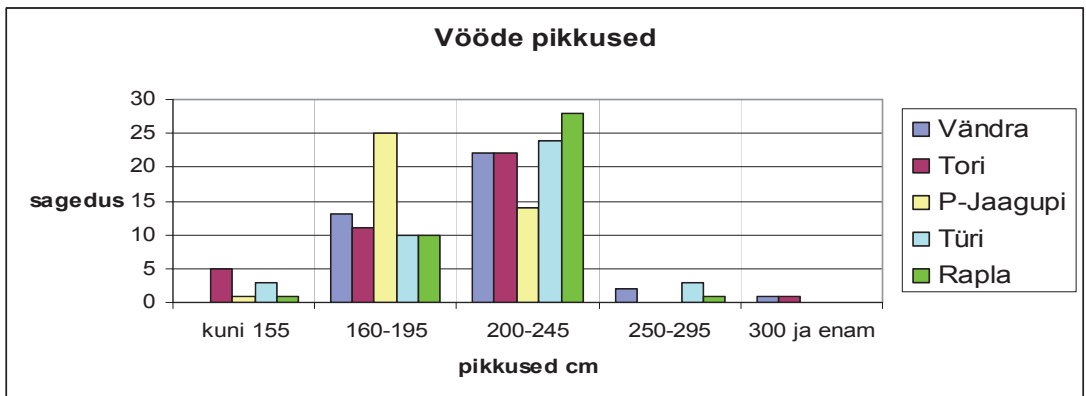
ERM A564: 1929



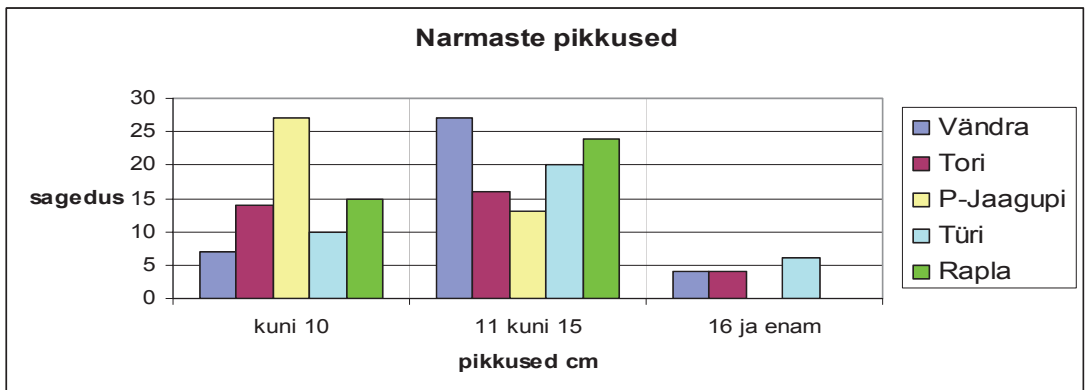
Joonis 1. Kirivööde laiuse paikkondlik esinemissagedus.



Joonis 2. Kirivööde pikkuse paikkondlik esinemissagedus.

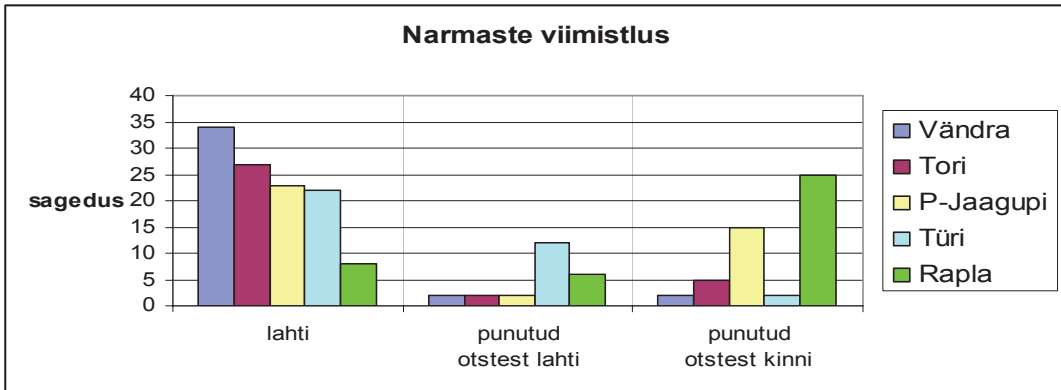


Joonis 3. Kirivööde narmaste pikkuse paikkondlik esinemissagedus.

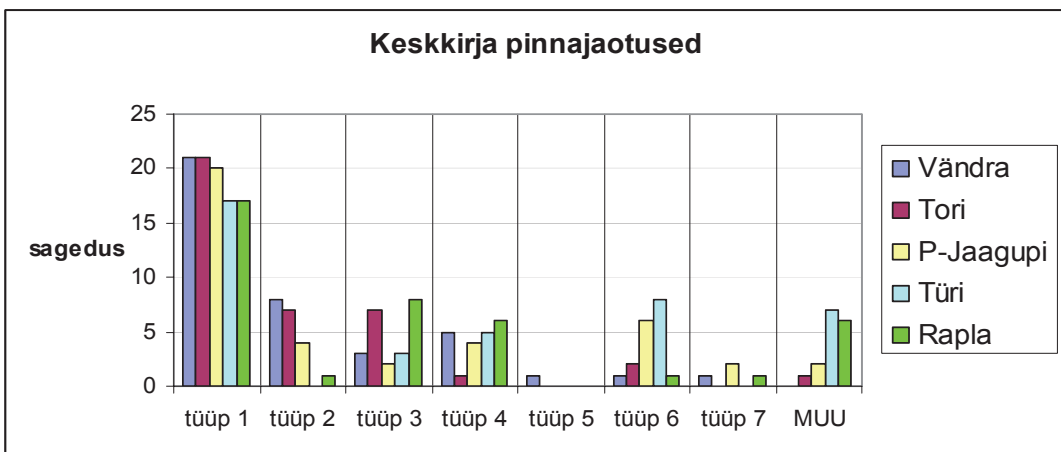


Viie kihelkonna kirivöö tunnuseid võrdlevad joonised.

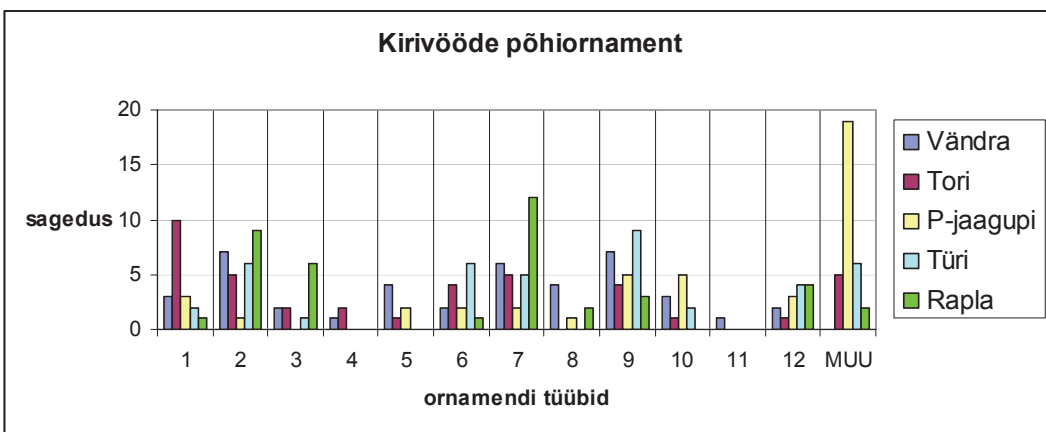
Joonis 1. Kirivööde narmaste viimistluse paikkondlik esinemissagedus.



Joonis 2. Kirivööde keskkirja pinnajaotuste paikkondlik esinemissagedus.

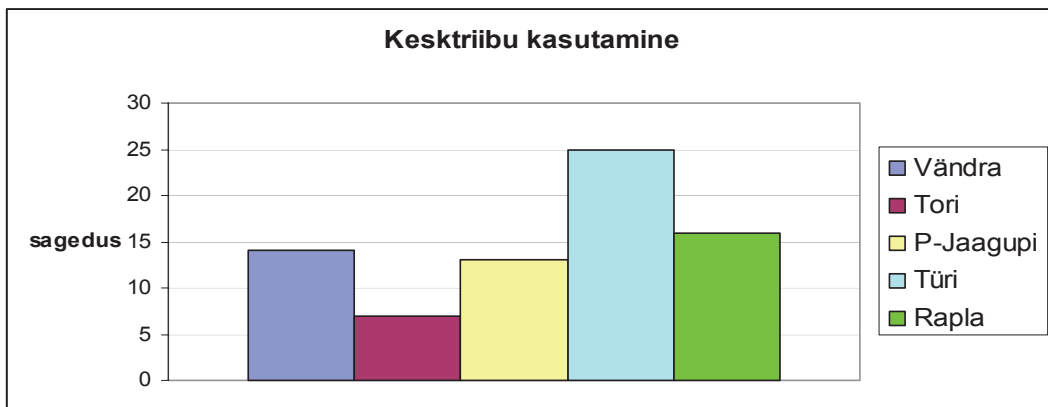


Joonis 3. Kirivööde keskkirja põhiornamendi kasutuse paikkondlik esinemissagedus.

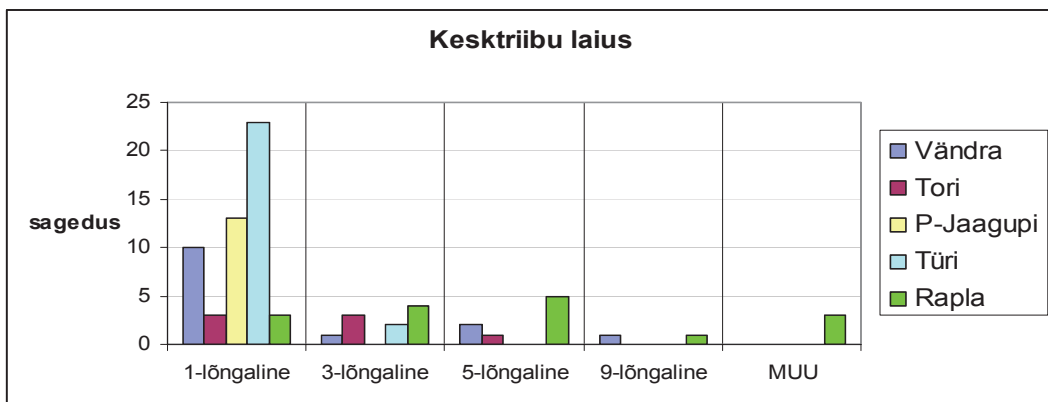




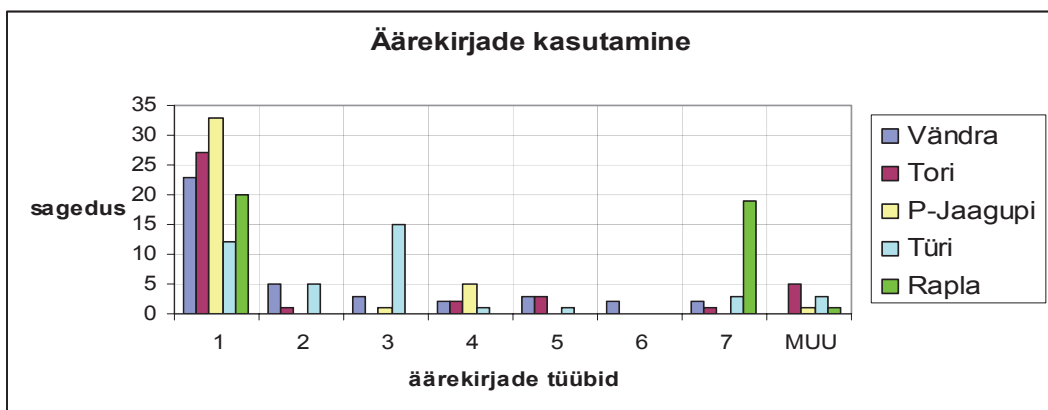
Joonis 1. Kirivööde kesktriibu kasutamise paikkondlik esinemissagedus.



Joonis 2. Kirivööde kesktriibu laiuse paikkondlik esinemissagedus.

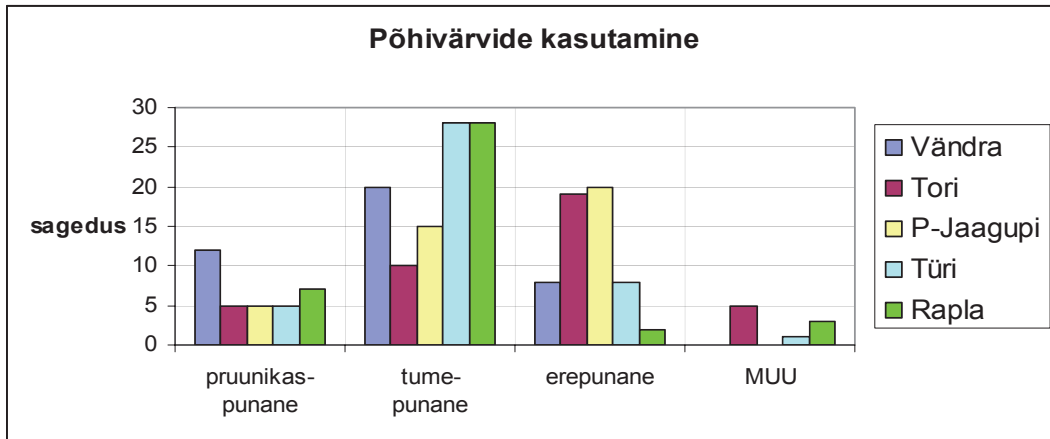


Joonis 3. Kirivööde äärekirja kasutamise paikkondlik esinemissagedus.

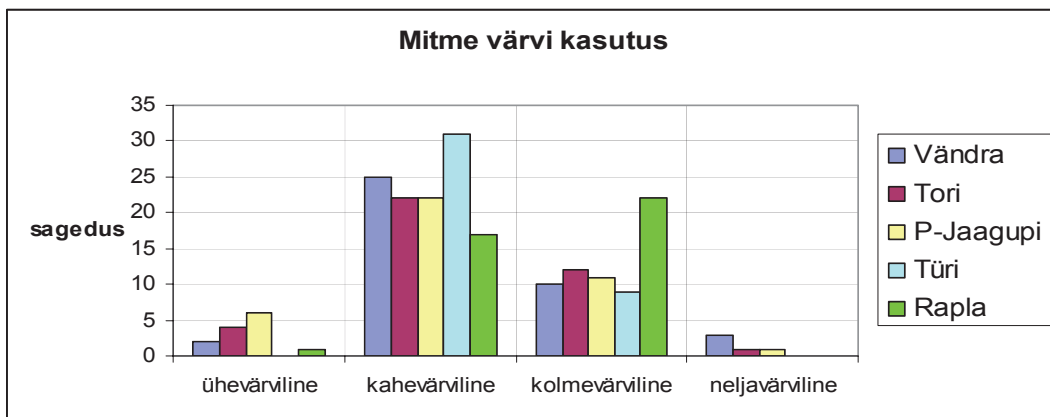


Viie kihelkonna kirivöö tunnuseid võrdlevad joonised.

Joonis 1. Kirivöö põhivärvi kasutamise paikkondlik esinemissagedus.



Joonis 2. Kirivöö mitmevärvilisuse kasutamise paikkondlik esinemissagedus.



Joonis 3. Kirivöö lisavärvide kasutamise paikkondlik esinemissagedus.

